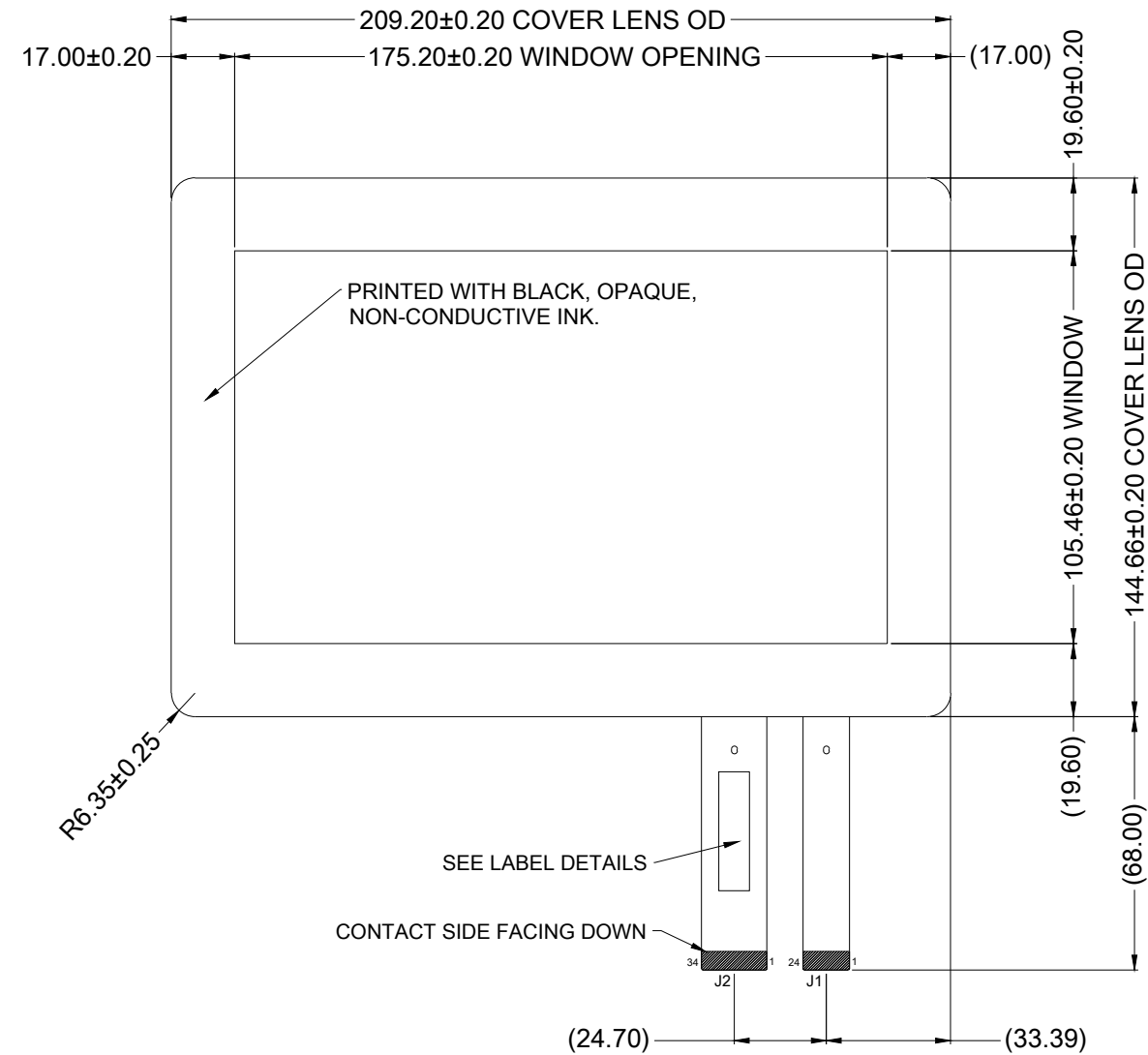
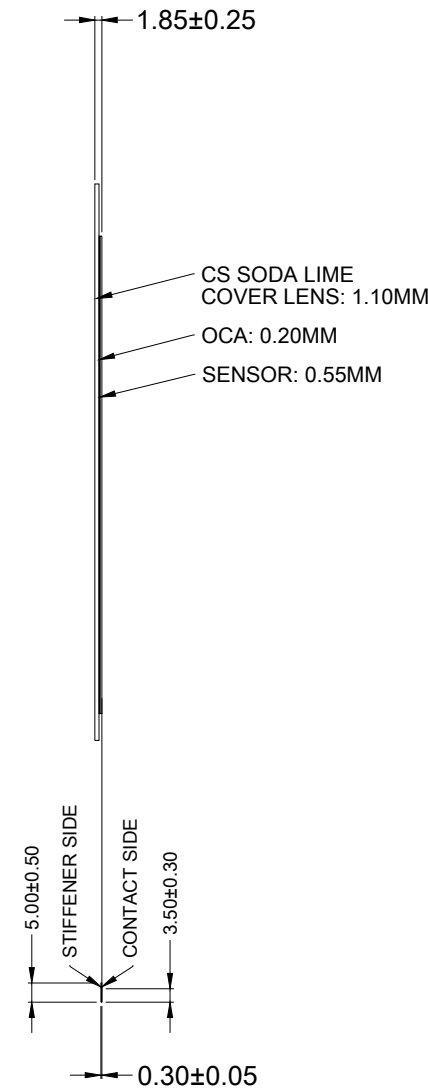


				REVISIONS	
ITEM REV	DWG REV	ECO	DESCRIPTION	DWN	DATE
A	1	-	INITIAL RELEASE.	TAF	05-10-17
A	2	-	PREPARED FOR WEBSITE RELEASE.	CPO	01-21-19

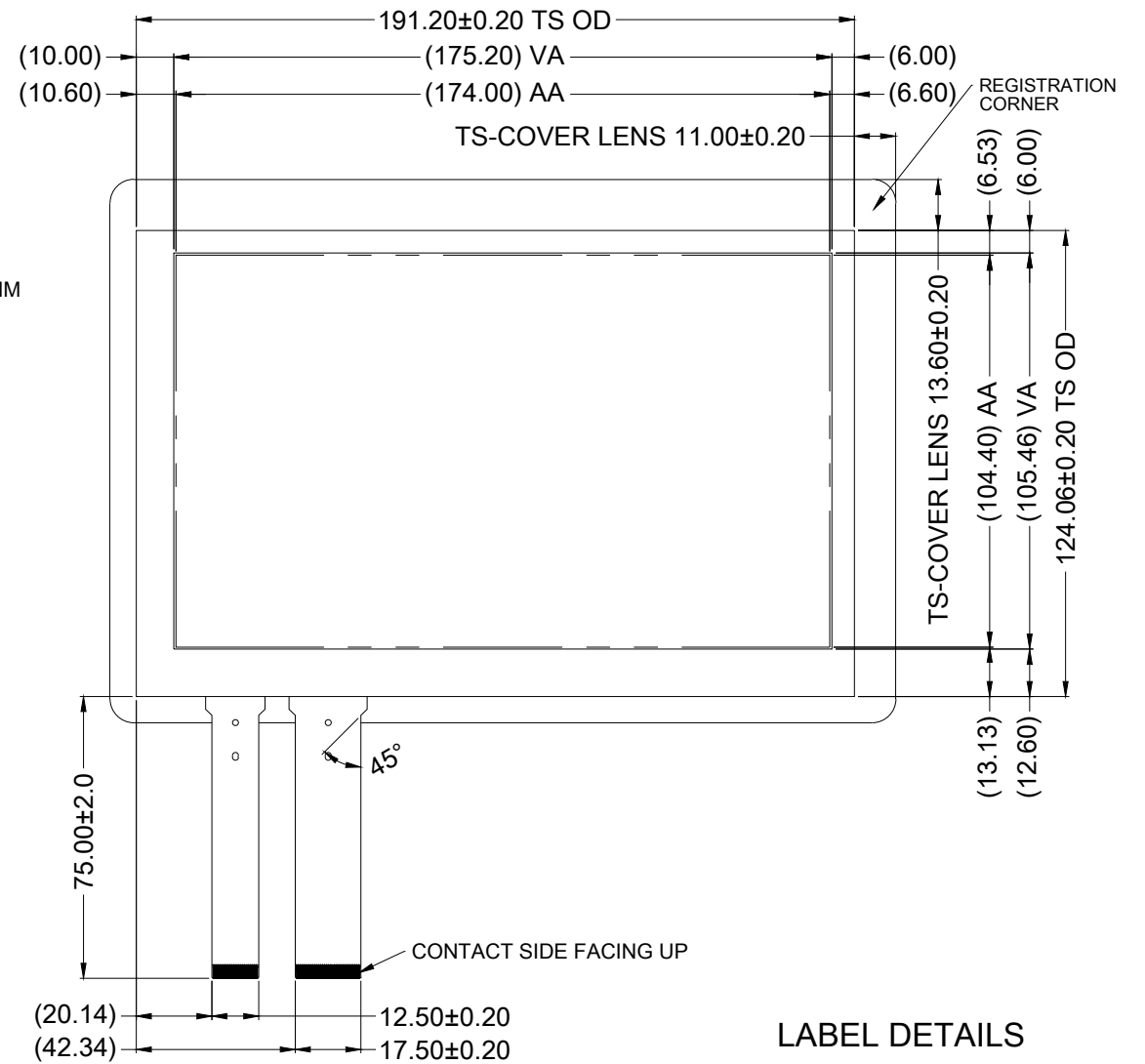
FRONT VIEW



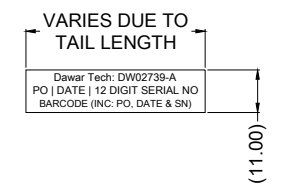
SIDE VIEW



REAR VIEW



LABEL DETAILS



NOTES:

- TAIL TYPE: GOLD PLATED FPC
- ALL MATERIALS ARE ROHS COMPLIANT.
- SENSOR SPECIFICATIONS PER QAD 19-1 (CURRENT REVISION).
- DIMENSIONS IN PARENTHESIS ARE FOR REFERENCE ONLY.
- FOR USE WITH 34 x 24 MICROCHIP (ATMEL) CONTROLLER.
- TOUCH SENSOR:
0.55MM GLASS WITH DOUBLE-SIDED INDEX MATCHED ITO.
- COVER LENS:
- 1.10MM CHEMICALLY STRENGTHENED SODA LIME GLASS
- DOUBLE ROUND PENCIL GROUND EDGE
- PANTONE BLACK



1016 North Lincoln Avenue, Pittsburgh, PA 15233
 1.800.366.1904 - 412.322.9900 - Fax: 412.322.9958
 e-mail: sales@dawar.com - www.dawar.com

THIS CONFIDENTIAL DOCUMENT IS THE PROPERTY OF DAWAR TECHNOLOGIES, INC. AND SHALL NOT BE COPIED, REPRODUCED, DISCLOSED, AND/OR USED AS THE BASIS FOR MANUFACTURING OR SALE WITHOUT PERMISSION OF A DULY AUTHORIZED REPRESENTATIVE OF DAWAR TECHNOLOGIES, INC.

DESCRIPTION
 8.0" GG2 PROJECTED CAPACITIVE TOUCH SENSOR

ITEM/DRAWING NO. DW02739-A				DWG REV 2
UNIT MM [INCH]	TOLERANCE ±0.25 [0.010] UNLESS SPECIFIED	SHEET 1 OF 1	DRAWN BY Troy Fritz	DATE 05-10-17